



CAPABILITIES STATEMENT

COMPANY SNAPSHOT

Cardinal Strategies, a certified WBE, SBE, and HUB, was founded in 2004 in Dallas, TX. Cardinal Strategies passionately provides Purpose Driven Water Solutions through our engineering, environmental, and specialty construction service offerings.

Our engineering team applies the latest technology to projects related to hydrology and hydraulics including flood studies and floodplain analysis.

Our environmental team provides stormwater compliance management for construction, industrial and commercial sites to ensure projects comply with federal, state, and municipality requirements.

Our construction team designs and installs a variety of slope, drainage, and erosion control remediation services for residential and commercial clients. Our construction group also provides landscaping and irrigation installation services.

Our experience delivers a technically competent, ethical, sustainable, and innovative approach to solving complex water challenges.

Cardinal Strategies, LLC
CAGE Code: 701M0
DUNS: 020379679
Business POC: Kim Anderson

"At Cardinal Strategies, we strive to make a positive impact on the world around us. We believe in using our expertise in engineering, environmental solutions, and construction to create sustainable and resilient communities. By providing innovative water solutions, we strive to protect our environment, improve public health and safety, and contribute to a better future for all." - Kim Anderson, President

WOMEN OWNED



CONTACT US

(469) 547-1281
2770 Capital Street, Wylie, TX 75098



info@cardinalstrategies.com
www.cardinalstrategies.com

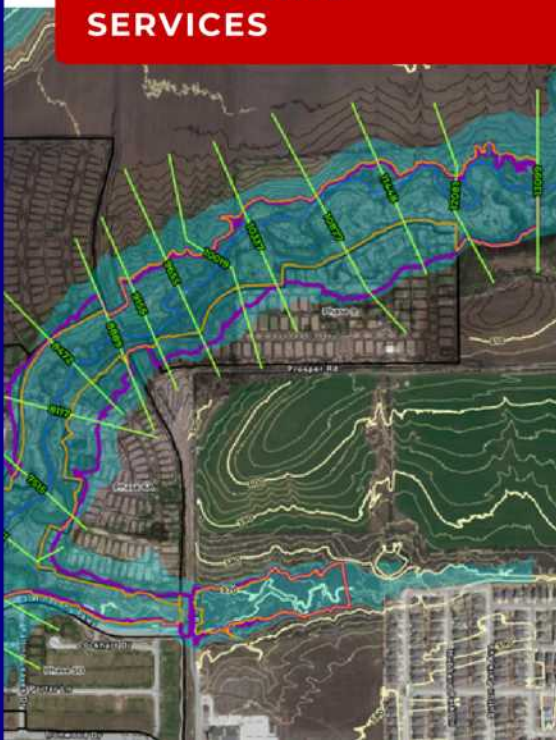


CONSTRUCTION SERVICES

- Stream Restoration and Bioremediation
- Residential and Commercial Foundation Drainage Systems
- Retaining Wall Construction and Repair
- Spillway Dam Remediation
- Wet Drainage Area and Standing Water
- Landslide Remediation
- Crawl space Moisture Remediation
- Sinkhole Remediation
- Urban Channel Bank Stabilization
- Swimming Pool Stabilization
- Basement Sealing, Waterproofing, Leak Repair and Drainage
- Other Major Erosion and Drainage Repairs
- Landscaping and Irrigation Installation

- Flood Studies and Downstream Assessments
- FEMA Letters of Map Change (LOMC)
- Detention Sizing
- Complex Hydraulic Systems
- Dam Breach Analyses
- Floodplain Analysis and Management
- Watershed Management
- Geomorphic Assessments
- Stream Restoration and Stabilization
- Erosion and Sediment Control Design

ENGINEERING SERVICES



ENVIRONMENTAL SERVICES

- Stormwater Compliance Comprehensive Program
- Stormwater Pollution Prevention Plan (SWPPP): Commercial + Construction
- Stormwater Management Plan (SWMP)
- Stormwater Quality Management Plan (SWQMP)
- Stormwater Inspections
- Post-Construction Stormwater Compliance
- Stormwater Compliance Training
- Spill Prevention, Control, and Countermeasure Plan (SPCC)
- Phase 1 Environmental Site Assessment (ESA)



NAICS CODES

- 237990** Other Heavy and Civil Engineering Construction
- 238910** Site Preparation Contractors
- 238990** All Other Specialty Trade Contractors

- 541330** Engineering Services
- 541620** Environmental Consulting Services
- 561730** Landscape Services
- 541690** Other Scientific and Technical Consulting Services

- 70000000** Farming and fishing and forestry and wildlife contracting services
- 70130000** Land and soil preparation and management and protection
 - 70131503** Erosion control services
- 70170000** Water resources development and oversight
 - 70171500** Water resource development service
 - 70171502** Water resources planning services
 - 70171504** Water resources mapping services
 - 70171505** River basin development
 - 70171506** Ground or surface water modeling services
 - 70171603** Floodplain management
 - 70171700** Irrigation system maintenance and management services
 - 70171702** Dam maintenance or management services
 - 70171706** Dike or embankment maintenance or management services
 - 70171708** Irrigation advisory services
 - 70171709** Irrigation systems management services
 - 70171710** Irrigation system construction service
 - 70171800** Drainage services
 - 70171801** Land drainage services
 - 70171802** Storm water drainage
 - 70171803** Flood protection or control services
- 72000000** Building and facility construction and maintenance services
 - 72100000** Building and facility maintenance and repair services
 - 72102900** Facility maintenance and repair services
 - 72102902** Landscaping services
 - 72102905** Exterior grounds maintenance
 - 72111001** Single family home remodeling addition and repair service
 - 72111002** Single family home general remodeling service
 - 72111005** Single family home fire damage repair service
 - 72111008** Single family new town home or garden home construction service
 - 72111100** Multiple unit dwelling construction services

UNSPSC CODES

- 72111101** New apartment building construction service
- 72111103** New condominium construction service
- 72111111** General residential construction contractor service
- 72120000** Nonresidential building construction services
 - 72121000** New industrial building and warehouse construction services
 - 72121008** Warehouse construction and remodeling service
 - 72121100** Commercial and office building construction services
 - 72121101** Commercial and office building new construction service
- 72140000** Heavy construction services
 - 72141200** Marine construction services
 - 72141203** Dam construction service
 - 72141205** Drainage system construction service
 - 72141208** Irrigation system construction service
 - 72141212** Pond construction service
 - 72151103** Irrigation sprinkler system installation service
- 77000000** Environmental services
 - 77100000** Environmental management
 - 77101700** Environmental advisory services
 - 77101701** Environmental sciences advisory services
 - 77101800** Environmental auditing
 - 77102000** Environmental reporting services
 - 81100000** Professional engineering services
 - 81101500** Civil engineering
 - 81101507** Dam engineering
 - 81101512** Geographic information system GIS services
 - 81101520** Hydrology assessment service
 - 81101528** Stormwater engineering
 - 83101502** Water resource management